

Welcome to the Softnoise newsletter for May 2013.

This newsletter gives information related to our software and to calculation methods in general. It includes an overview of latest software releases and an overview of events where you can meet us.

SourceDB

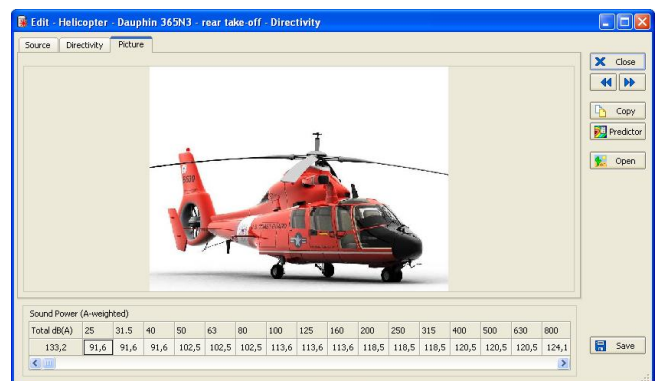
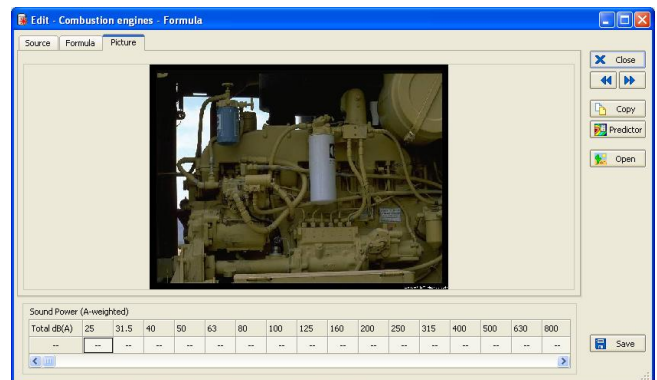
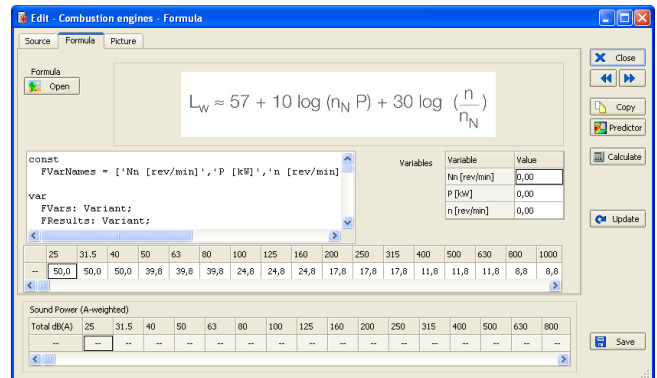
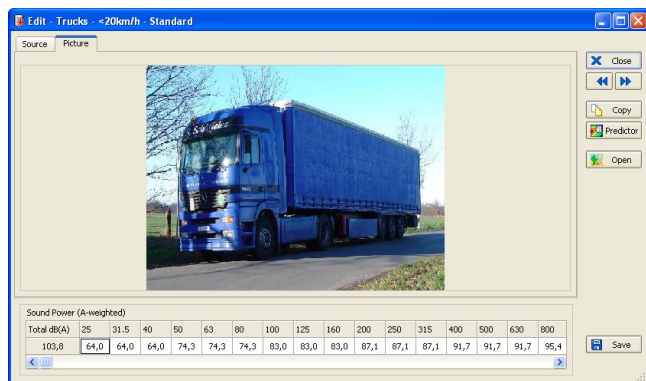
The Predictor-LimA software suite includes the SourceDB application. SourceDB is a convenient software for maintaining databases with 1/3 octave sound power levels for industrial sources. The software includes a source database developed within the European Imagine working group. Sources can be point, line or area sources. Additional information like drive type and industry type can be added as well as measurement conditions and pictures. SourceDB supports a powerful script programming language. This makes it possible for the user to add and store formulas in the database to calculate the sound power level based on configurable input parameters.

Predictor™ is a Trademark of Brüel & Kjær. LimA™ is a trademark of Stapelfeldt Ingenieurgesellschaft mbH. Predictor-LimA is distributed exclusively by Brüel & Kjær worldwide. For more information please visit <http://bksv.com/7810>

Tip of the day

The website <http://converter.mygeodata.eu/> can be used to convert several GIS formats to Shape so they can be imported into Predictor-LimA. Also formats like GML and DGN.

The following pictures give an impression of the content of the SourceDB database.



Did you know

that the latest versions of NoiseAtWork and Predictor-LimA support Windows 8?

Latest software releases

- » Predictor-LimA V9.012 (B&K Type 7810)
- » NoiseAtWork V3.3 (DGMR Type NAW)

Events – We look forward meeting you!

- » ICA 2013 : 2-7 June, Canada
- » NoiseCon-WTN 2013: 26-30 Aug, USA
- » Internoise 2013 : 15-18 Sep, Austria